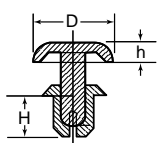




SR/SRVO/SRHR Series Snap Rivet



Specifications:

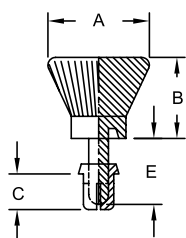
- Material: Nylon 6; Nylon 66/6; Nylon 4/6
- Color: Black, White, or Tan

Features:

- Designed for fast & easy installation without any tools
- Simply place rivet into hole & press down on the head to fasten
- Round head provides a clean, finished look
- SRHR part numbers withstand temperatures up to 266°F (130°C)

Item No.									Pack Qty.
Nylon 6 UL 94V-2		Nylon 6/6 UL 94V-0	Nylon 4/6 UL 94V-2	Hole Dia.	Panel Thickness	D	H	h	
Black	White	Black	Tan	In	In	In	In	In	
SR-2024B	SR-2024W	SRVO-2024B	—	0.083 - 0.087	0.024 - 0.047	0.165	0.090	0.047	1000
SR-2032B	SR-2032W	SRVO-2032B	—	0.083 - 0.087	0.051 - 0.079	0.165	0.130	0.047	1000
SR-2040B	SR-2040W	SRVO-2040B	—	0.083 - 0.087	0.083 - 0.110	0.165	0.160	0.047	1000
SR-2048B	SR-2048W	SRVO-2048B	—	0.083 - 0.087	0.114 - 0.142	0.165	0.190	0.047	1000
SR-2056B	SR-2056W	SRVO-2056B	—	0.083 - 0.087	0.146 - 0.173	0.165	0.220	0.047	1000
SR-2064B	SR-2064W	SRVO-2064B	—	0.083 - 0.087	0.173 - 0.197	0.165	0.250	0.047	1000
SR-2632B	SR-2632W	SRVO-2632B	—	0.106 - 0.110	0.039 - 0.079	0.197	0.130	0.055	1000
SR-2642B	SR-2642W	SRVO-2642B	—	0.106 - 0.110	0.079 - 0.118	0.197	0.170	0.055	1000
SR-2648B	SR-2648W	SRVO-2648B	—	0.106 - 0.110	0.106 - 0.142	0.197	0.190	0.055	1000
SR-2655B	SR-2655W	SRVO-2655B	—	0.106 - 0.110	0.134 - 0.169	0.197	0.220	0.055	1000
SR-2664B	SR-2664W	SRVO-2664B	—	0.106 - 0.110	0.169 - 0.205	0.197	0.250	0.055	1000
SR-2672B	SR-2672W	SRVO-2672B	—	0.106 - 0.110	0.201 - 0.236	0.197	0.280	0.055	1000
SR-3035B	SR-3035W	SRVO-3035B	SRHR-3035	0.122 - 0.126	0.039 - 0.079	0.252	0.140	0.063	1000
SR-3045B	SR-3045W	SRVO-3045B	SRHR-3045	0.122 - 0.126	0.079 - 0.118	0.252	0.180	0.063	1000
SR-3055B	SR-3055W	SRVO-3055B	SRHR-3055	0.122 - 0.126	0.118 - 0.157	0.252	0.220	0.063	1000
SR-3065B	SR-3065W	SRVO-3065B	SRHR-3065	0.122 - 0.126	0.157 - 0.197	0.252	0.260	0.063	1000
SR-3075B	SR-3075W	SRVO-3075B	—	0.122 - 0.126	0.197 - 0.236	0.252	0.300	0.063	1000
SR-3080B	SR-3080W	SRVO-3080B	SRHR-3080	0.122 - 0.126	0.217 - 0.256	0.252	0.320	0.063	1000
SR-3090B	SR-3090W	SRVO-3090B	—	0.122 - 0.126	0.256 - 0.295	0.252	0.350	0.063	1000
SR-3100B	SR-3100W	SRVO-3100B	—	0.122 - 0.126	0.295 - 0.335	0.252	0.390	0.063	1000
RS200B	RS200W	—	—	0.122 - 0.126	0.453 - 0.512	0.252	0.571	0.063	1000
SR-3230B	RS205W	—	—	0.122 - 0.126	0.807 - 0.847	0.252	0.906	0.063	1000
SR-3535B	SR-3535W	SRVO-3535B	SRHR-3535	0.142 - 0.146	0.047 - 0.083	0.252	0.140	0.063	1000
SR-3545B	SR-3545W	SRVO-3545B	SRHR-3545	0.142 - 0.146	0.083 - 0.118	0.252	0.180	0.063	1000
SR-3550B	SR-3550W	SRVO-3550B	—	0.142 - 0.146	0.106 - 0.142	0.252	0.200	0.063	1000
SR-3555B	SR-3555W	SRVO-3555B	SRHR-3555	0.142 - 0.146	0.118 - 0.157	0.252	0.220	0.063	1000
SR-3560B	SR-3560W	SRVO-3560B	—	0.142 - 0.146	0.146 - 0.181	0.252	0.240	0.063	1000
SR-3570B	SR-3570W	SRVO-3570B	—	0.142 - 0.146	0.177 - 0.217	0.252	0.280	0.063	1000
SR-3580B	SR-3580W	SRVO-3580B	—	0.142 - 0.146	0.217 - 0.256	0.252	0.320	0.063	1000
SR-4050B	SR-4050W	SRVO-4050B	SRHR-4050	0.161 - 0.165	0.098 - 0.138	0.315	0.200	0.071	1000
SR-4060B	SR-4060W	SRVO-4060B	SRHR-4060	0.161 - 0.165	0.138 - 0.177	0.315	0.240	0.071	1000
SR-4070B	SR-4070W	SRVO-4070B	SRHR-4070	0.161 - 0.165	0.177 - 0.217	0.315	0.280	0.071	1000
SR-4080B	SR-4080W	SRVO-4080B	SRHR-4080	0.161 - 0.165	0.217 - 0.256	0.315	0.320	0.071	1000
SR-4090B	SR-4090W	SRVO-4090B	SRHR-4090	0.161 - 0.165	0.256 - 0.295	0.315	0.350	0.071	1000
SR-4100B	SR-4100W	SRVO-4100B	SRHR-4100	0.161 - 0.165	0.295 - 0.335	0.315	0.390	0.071	1000
SR-4120B	SR-4120W	SRVO-4120B	—	0.161 - 0.165	0.354 - 0.413	0.315	0.470	0.071	1000
SR-5045B	SR-5045W	SRVO-5045B	—	0.201 - 0.205	0.059 - 0.098	0.354	0.180	0.087	1000
SR-5055B	SR-5055W	SRVO-5055B	—	0.201 - 0.205	0.098 - 0.138	0.354	0.220	0.087	1000
SR-5065B	SR-5065W	SRVO-5065B	—	0.201 - 0.205	0.138 - 0.177	0.354	0.260	0.087	1000
SR-5075B	SR-5075W	SRVO-5075B	—	0.201 - 0.205	0.177 - 0.217	0.354	0.300	0.087	1000
SR-5085B	SR-5085W	SRVO-5085B	—	0.201 - 0.205	0.217 - 0.256	0.354	0.340	0.087	1000
SR-5095B	SR-5095W	SRVO-5095B	—	0.201 - 0.205	0.256 - 0.295	0.354	0.370	0.087	1000
SR-5105B	SR-5105W	SRVO-5105B	—	0.201 - 0.205	0.295 - 0.335	0.354	0.410	0.087	1000
SR-6060B	SR-6060W	SRVO-6060B	—	0.240 - 0.244	0.098 - 0.157	0.472	0.240	0.098	1000
SR-6080B	SR-6080W	SRVO-6080B	—	0.240 - 0.244	0.138 - 0.217	0.472	0.320	0.118	1000

SRT Snap Rivet, T-Type



Specifications:

- Material: UL94 V-2 Nylon 6/6
- Color: Black

Features:

- Push/pull knob lets rivet snap in and out up to 25 times
- For applications requiring speedy assembly and disassembly

Item No.	Hole Ø		Total Holding Thickness		A Ø		B		C		E		Pack Qty.
	In	mm	In	mm	In	mm	In	mm	In	mm	In	mm	
SRT-3035B	.122 - .126	3.1 - 3.2	.039 - .079	1.0 - 2.0	.394	10.0	.315	8.0	.14	3.5	.26	6.5	1000
SRT-3045B	.122 - .126	3.1 - 3.2	.079 - .118	2.0 - 3.0	.394	10.0	.315	8.0	.18	4.5	.26	6.5	1000
SRT-3055B	.122 - .126	3.1 - 3.2	.118 - .157	3.0 - 4.0	.394	10.0	.315	8.0	.22	5.6	.26	6.5	1000
SRT-3065B	.122 - .126	3.1 - 3.2	.157 - .197	4.0 - 5.0	.394	10.0	.315	8.0	.26	6.5	.35	9.0	1000
SRT-3075B	.122 - .126	3.1 - 3.2	.197 - .236	5.0 - 6.0	.394	10.0	.315	8.0	.30	7.5	.35	9.0	1000
SRT-3080B	.122 - .126	3.1 - 3.2	.217 - .256	5.5 - 6.5	.394	10.0	.315	8.0	.32	8.0	.35	9.0	1000
SRT-3535B	.142 - .146	3.6 - 3.7	.039 - .079	1.0 - 2.0	.394	10.0	.315	8.0	.14	3.5	.26	6.6	1000
SRT-3545B	.142 - .146	3.6 - 3.7	.079 - .118	2.0 - 3.0	.394	10.0	.315	8.0	.18	4.5	.26	6.6	1000
SRT-3555B	.142 - .146	3.6 - 3.7	.118 - .146	3.0 - 3.7	.394	10.0	.315	8.0	.22	5.5	.26	6.6	1000
SRT-3570B	.142 - .146	3.6 - 3.7	.150 - .205	3.8 - 5.2	.394	10.0	.315	8.0	.28	7.0	.35	9.0	1000
SRT-3580B	.142 - .146	3.6 - 3.7	.209 - .256	5.3 - 6.5	.394	10.0	.315	8.0	.32	8.0	.35	9.0	1000
SRT-4050B	.161 - .165	4.1 - 4.2	.098 - .138	2.5 - 3.5	.472	12.0	.315	8.0	.20	5.0	.30	7.6	1000
SRT-4060B	.161 - .165	4.1 - 4.2	.138 - .177	3.5 - 4.5	.472	12.0	.315	8.0	.24	6.0	.30	7.6	1000
SRT-4070B	.161 - .165	4.1 - 4.2	.177 - .216	4.5 - 5.5	.472	12.0	.315	8.0	.28	7.0	.44	11.2	1000
SRT-4080B	.161 - .165	4.1 - 4.2	.216 - .256	5.5 - 6.5	.472	12.0	.315	8.0	.32	8.0	.44	11.2	1000
SRT-4090B	.161 - .165	4.1 - 4.2	.256 - .295	6.5 - 7.5	.472	12.0	.315	8.0	.35	9.0	.44	11.2	1000
SRT-4100B	.161 - .165	4.1 - 4.2	.295 - .335	7.5 - 8.5	.472	12.0	.315	8.0	.39	10.0	.44	11.2	1000